

**29**  
YEARS



**BI MARKETING**<sup>®</sup>  
— AND SERVICES P LTD —

**PRODUCT CATALOGUE**

**GRUNDFOS** 

**SANDPIPER**<sup>®</sup>  
A WARREN PUMP, INC. BRAND

**MANN+  
HUMMEL**

**PULSAFEEDER**<sup>®</sup>  
ENGINEERED PRODUCTS

**FUJIMAC**

 **MITSUBISHI  
CHEMICAL**

**VIKING  
PUMP**<sup>®</sup>  
HYGIENIC

**TOYOBO**  
MC Corporation

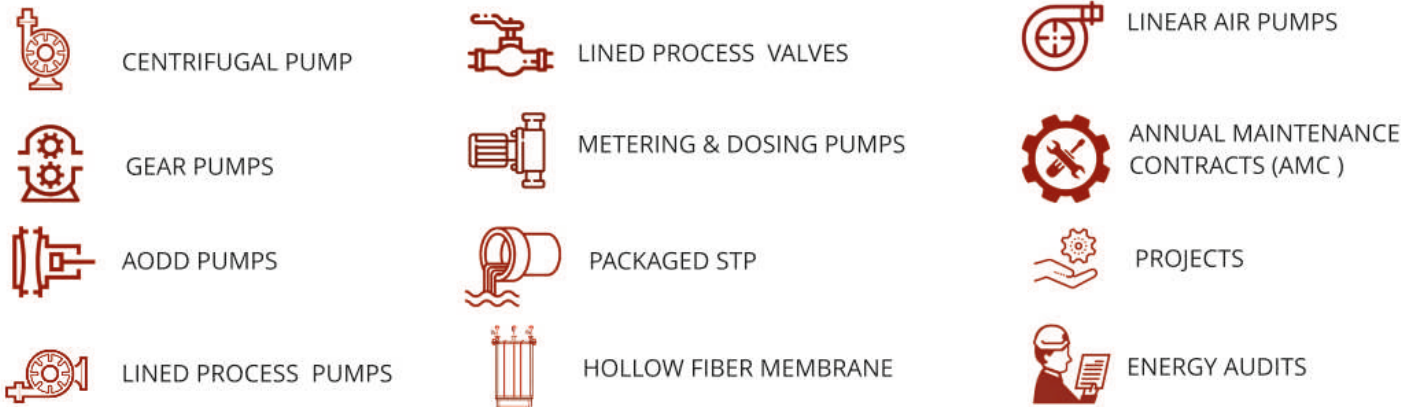
## ABOUT US



'BI Marketing and Services Pvt Ltd,' originally 'Business International' since 1992, redefined itself in 2000 and has since been a leader in providing technical solutions for challenging pumping applications. Based in Chennai, it commands a significant presence across South India. As an authorized integrator for notable pump brands such as Grundfos, Sandpiper, Viking, OBL, and Pulsafeeder, the company is synonymous with technical excellence.

Since 2017, as a subsidiary of the HECS Group, the company has leveraged collective expertise to enhance its offerings in wastewater treatment, in alliance with industry giants like Mitsubishi and Mann+Hummel. This synergy has solidified its role in delivering state-of-the-art fluid management solutions to the Industrial and Commercial sectors.

## PRODUCTS & SERVICES



## OUR NETWORK

### Offices : ●

Chennai  
Vellore  
Pondicherry  
Coimbatore  
Perundurai  
Cochin  
Mangalore  
Hyderabad  
Tirupathi

### Warehouses : ●

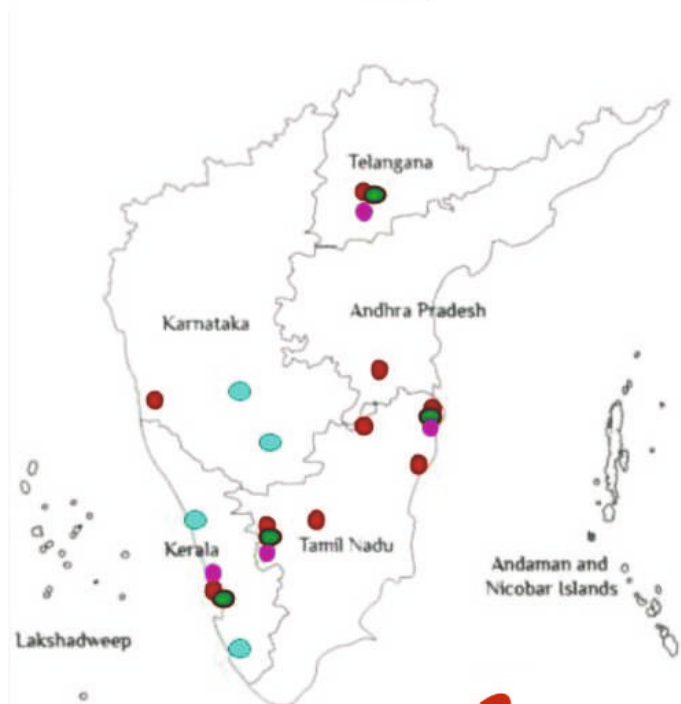
Chennai  
Coimbatore  
Hyderabad  
Cochin

### Residential Engineers: ●

Bangalore  
Trivandrum  
Anantapur  
Kozhikode

### Service Centers: ●

Chennai  
Coimbatore  
Hyderabad  
Cochin



# GRUNDFOS X | CENTRIFUGAL PUMPS

Grundfos is the largest pump manufacturer in the world and is head quartered in Denmark. Grundfos produces annually more than 16 million pump units which include circulator pumps, submersible pumps, and centrifugal pumps. For over two decades now BI Marketing and Services P Ltd is the largest Dealer and System Integrator of Grundfos in India for the Industrial and Commercial Buildings Segment.



**CM**

**CENTRIFUGAL MODULAR BOOSTER & PUMPS**

Domestic water supply, constant pressure booster & industrial water transfer, CIP



**CRE, CRNE**

**VERTICAL IN LINE MULTI STAGE CENTRIFUGAL**

Industrial application (RO, Boiler, Condensate, Cooling towers, Machine tool, High pressure etc.)



**MTRE, MTA**

**MULTI-STAGE CENTRIFUGAL IMMERSIBLE PUMPS**

Industrial application Filtering systems, coolant transfer



**NK, NB, NKE**

**SINGLE-STAGE CENTRIFUGAL PUMPS, LONG & SHORT COUPLED**

Heating and hot water service system, cooling and air-conditioning systems, industrial applications.



**TP, TPE**

**HEATING AND HOT WATER SERVICE SYSTEM, COOLING AND AIR-CONDITIONING SYSTEMS,**

Single-stage centrifugal pumps, electronically controlled



**HYDRO MULTI-E**

**CENTRIFUGAL PRESSURE BOOSTING SYSTEM**

Industrial applications, HVAC & Irrigation applications, pressure boosting and liquid transfer



**DWK/DPK, KP, AP**

**SUBMERSIBLE DEWATERING AND DRAINAGE PUMPS**

Drainage and wastewater transfer submersible pumps.



**SEG, SE, SL, SLV**

**EFFLUENT AND SEWAGE GRINDER & CENTRIFUGAL PUMPS**

Sewage & wastewater transfer pumps.



**SP**

**4", "6", "8" - CENTRIFUGAL SUBMERSIBLE PUMPS**

Groundwater supply, domestic water supply, pressure boosting



**DIGITAL DOSING**

**DIAPHRAGM TYPE & CHEMICAL DOSING PUMPS**

Water treatment Plant, cooling tower, boiler, drinking water, pressure doing of chemicals



**UPA/UPS, MAGNA**

**CENTRIFUGAL CIRCULATOR PUMPS, CANNED-ROTOR TYPE PUMPS**

Domestic water supply, pressure boosting, heating & hot water service systems



**SPARES**

We are the authorized Service Partners for Grundfos in over 5 States across South India.



## AIR OPERATED DOUBLE DIAPHRAGM PUMPS

Since 1965 Sandpiper is a leader in AODD Pumps globally. SANDPIPER delivers best-in-class pumping and engineering innovations for your most difficult and demanding pumping challenges. Sandpiper AODD Pumps are a part of IDEX Corporation USA and are known globally for their reliability along with unrivalled durability and performance.



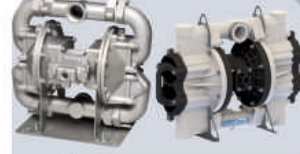
### STANDARD DUTY METALLIC

Standard Duty Metallic Pumps are ideally suited for intermittent / on-demand, portable, moderately abrasive fluids, and suspended solids.



### STANDARD DUTY NON METALLIC

Standard Duty Non Metallic Pumps are ideally suited for intermittent / on-demand, portable, moderately corrosive fluids, and suspended solids.



### HEAVY DUTY FLAP VALVE PUMP

HDF Pumps are recommended for abrasive slurries, suspended and non-suspended solids and line-size solids requirements.



### HEAVY DUTY BALL VALVE

HDB Metallic Pumps are ideal for thin to highly viscous and small solids-laden fluids, while providing excellent suction lift capability and exclusive variable porting options.



### SPECIAL DUTY PUMPS

They are designed to handle hazardous, abrasive, corrosive, viscous, flammable fluids and many other critical liquids with ease



### NATURAL GAS PUMP

The G-Series carries the most stringent certifications for safety in the double diaphragm marketplace and is proven successful in worldwide upstream and midstream oil and gas processes.



### CONTAINMENT DUTY PUMP

Containment Duty Metallic and Non-Metallic Pumps are best suited for highly corrosive and hazardous chemical fluid requirements.



### ACCESSORIES

BI Marketing is the authorized Service Partners for Sandpiper in over 5 States across South India.



## GEAR PUMPS



They are designed for operations in virtually every industry like food and beverages, chemicals fuels, plastics etc.,

Reliably pumping materials that are thin/thick, hot/cold, liquids

Viking Gear Pump, a Unit of IDEX Corporation leads the world in the design and manufacture of rotary positive displacement pumps for use in some of the toughest applications.

Viking pumps have liquid specific pumps for various applications such as abrasive liquids thin liquid vane pumps, refrigeration ammonia pumps, fuel oil pump etc.,

Various sealing options are also available in the viking series such as gland packing, mechanical seal with API & Non API flushing plans, magnetically driven pump etc., The pumps are also available in jacketed and Non Jacketed options.

# MANN+HUMMEL ULTRAFILTRATION MEMBRANES

## AQUADYN<sup>®</sup>



AQUADYN<sup>®</sup> modules feature a 0.025 micron hydrophilic PAN membrane with low-fouling, high-flux, and double asymmetric attributes for enhanced rejection of bacteria and solids. Its unique double layer prevents pore clogging during backflush

## PureULTRA II



PureULTRA II UF modules use a modified PVDF hollow fiber membrane with a 0.025 micron pore size for superior filtration, including pathogen rejection. Their outside-in flow design and high tensile strength fibers ensure efficient cleaning and durability, even with various feed water sources.

## iSEP<sup>™</sup> Ultrafiltration Modules



iSep: iSep<sup>™</sup> ultrafiltration modules utilize a vacuum-driven, backwashable design to treat high fouling water streams efficiently. In certain cases they eliminate extensive pre-treatment, reducing costs, footprint, and complexity, thereby streamlining water treatment processes.



## | API 675 STD METERING PUMPS

For over 70 years, Pulsafeeder, ( A unit of IDEX Corporation) continues to be a leader in diaphragm and dosing metering technologies. Pulsafeeder pumps are known for their rugged construction, dependable performance and API-675 compliance. All products are at the highest level of manufacturing excellence and quality control. Pulsafeeder is ISO 9001 and ISO14001 certified.



### PROCESS PUMP

The PulsaPro Series standard continues to set the pace. With different material options for the reagent head, PulsaPro series can successfully handle a variety of liquid, Specially chemical, and gaseous solutions.



### DIAPHRAGM METERING

Hydraulic Actuated Diaphragm metering pumps successfully handling a variety of flammable liquids and gaseous materials.

Most models include our standard built-in bleed valve, makeup valve,



### EXTERNAL GEAR PUMP

Typical applications that the Eclipse series is ideal for are acids, solvents, caustics, polymers, bleaches, dyes/inks, pH control, catalysts, cleaning agents, and many more



### ENGINEERED SYSTEMS

chemical injection packages are a vital component in Chemical, Petrochemical, Refining, and Oil & Gas applications.

ensures they are compliant with industry and international standards (e.g. ASME, API, ATEX).



### METERING PUMPS

OBL Metering pumps manufactures and markets one of the widest portfolio of metering pumps ( From simplest loss motion plunger to full motion double hydraulic diaphragm to API 675 STD ) and polymer silution units ( both from dry and liquid status ).

Metering & dosing pumps-API 675 -Hydraulic Diaphragm Pump, API 675- Plunger Type pump, Non-API and mechanical Diaphragm Pump.

### APPLICATIONS:

A strong diaphragm, sealed metering units and resistant materials make a very useful combination in oil/gas production ( on shore / off shore),Refineries,and the chemical and petrochemical, pharmaceutical, cosmetic and food production industries.

## WATER AND WASTE WATER TREATMENT SOLUTIONS

BI Marketing and services has strategic to ups with various international water and waste water treatment components manufactures and provides a wide range of products and services to this segment across the country.

### AIR PUMPS



#### FEATURES

- Upto 80% lower in power consumption.
- Low Noise levels (Equal to a mobile phones vibration)
- Low Footprint.
- Easy to Maintain.

### MBR HOLLOW FIBER MEMBRANE



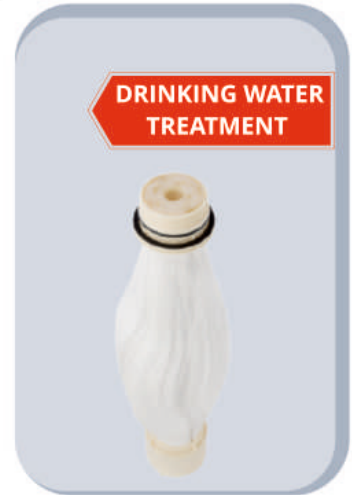
#### WASTEWATER TREATMENT (SUBMERGED)

Our hollow fiber membranes have been used in applications such as MBR, tertiary treatment and metal wastewater treatment.



#### DRINKING WATER TREATMENT (SUBMERGED)

Membrane filtration provides water quality that meets stringent drinking water standards while using less chemicals, smaller footprint, and reducing residual waste than standard conventional drinking water treatment processes.



#### DRINKING WATER TREATMENT (PRESSURIZED)

With STERAPORE™ 8000 Series, you can simplify system design, operation, and reduce installation

## TOYOBO TOYOBO MC Corporation

#### FEATURES

- Polyamide spiral-wound RO element
- Compatible with other spiral-wound RO elements
- Supported by our experienced technical staff

#### APPLICATION

- Brackish water, ground water treatment
- 2nd pass of RO desalination plant Wastewater treatment
- Production water supply system for electronics, power, etc.

### Spiral-Wound RO Element for Brackish Water



#### Type

Standard<sup>\*1</sup>

High flux<sup>\*1</sup>

High flux & Ultra low pressure<sup>\*2</sup>

Fouling resistance<sup>\*1</sup>

High flux & Fouling resistance<sup>\*1</sup>

#### Operating limits

Maximum Pressure	600 psi (4.14 MPa)	Maximum Feed water SDI <sub>15</sub>	5
Maximum Temperature	45 deg.C	pH range during operation	3 - 10
Maximum Feed water flow	17 m <sup>3</sup> /hr : 8 inch	Free chlorine of feed water	Not detectable
	3.6 m <sup>3</sup> /hr : 4 inch	Maximum element pressure drop	0.1 MPa (15 psi)

## PROJECTS

With over 27 Years of experience in providing pumping solutions, BI Marketing & Services provide comprehensive solutions to all pumping systems and piping requirements in industries and commercial buildings right from the design stage till its execution.

### OUR SOLUTIONS :

- DESIGN
- PROJECT MANAGEMENT & EXECUTION
- DETAILED ENGINEERING
- ENERGY AUDIT & OPTIMIZATION
- CONTROL & AUTOMATION
- RETROFITS

#### FIRE FIGHTING SYSTEMS



- System Designing & Detail Engg.
- Yard Hydrant Piping
- Sprinkler Piping
- Fire alarm & PA systems.

#### UTILITY WATER SYSTEMS



- System Designing & Detail Engg.
- Raw Water, Rain Water
- De- Watering System
- Water Distribution System
- Waste Water Transfer System

#### HVAC PIPING



- System Designing & Detail Engg.
- Chill Water Piping
- Hot Water Piping

#### INDUSTRIAL PIPING



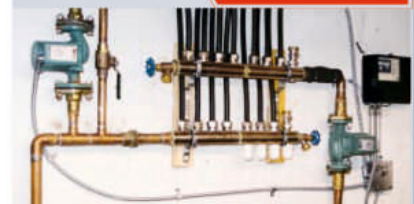
- Chiller Systems.
- Hot Water Systems
- Clean & Stainless Steel Piping
- DG & Exhaust Systems

#### ENERGY AUDIT & OPTIMIZATION



- Considerable Savings on Operating costs
- Significantly Reduce climate impact
- Fact based optimized performance
- Improves profitability and payback time on the up -front investment

#### RETROFITS



Replacement or expansion the exiting systems with advance energy optimized system. .

## WHY BIMS

- Timely and Versatile execution capability
- Priority support from leading international & domestic manufactures.
- Team of Qualified and experienced Professionals
- Comprehensive solutions which includes Water Generation( RO / DM Plant), Pumping and Distribution (HVAC Piping, Compressed Air, Fire Fighting System, Plumbing) & Sewage Treatment, O & M Works for all the Packages
- Quick response through our distributed network of Engineers
- Priorities such as Economy, Efficiency and Reliability
- Wide Distribution and support Network



# BI MARKETING<sup>®</sup>

— AND SERVICES P LTD —

[WWW.BIGROUP.IN](http://WWW.BIGROUP.IN)

[info@bigroup.in](mailto:info@bigroup.in)



## CHENNAI- HEAD OFFICE

No: 21, 3rd Phase, TVK Industrial Estate,  
Guindy, Chennai, Tamil Nadu- 600 032.  
Phone: +91 75488 87888  
Coordinator( Sales ): +91-9150021304 /  
+91-9367444050  
Coordinator ( Service ): +91-9367444041  
Service Manager: +91-9367444048  
Sales Email: [info@bigroup.in](mailto:info@bigroup.in)  
Service Email : [service@bigroup.in](mailto:service@bigroup.in)



## PONDICHERRY

No.129, Perumal Kovil Street,  
Heritage Town,  
Pondicherry - 605 001  
Coordinator( Sales ): +91-9150021304 /  
+91-9367444050  
Asst. Sales Manager : +91- 7824860101  
Email : [devanath@bigroup.in](mailto:devanath@bigroup.in)



## COIMBATORE

No. 7/50-6A-1, Maruthi Industrial Nagar,  
Keeranatham, Coimbatore - 641035.  
Phone: 0422-4379500  
Coordinator (Sales): +91-9367444027  
Coordinator (Service): +91- 9367444064  
Branch Manager: +91-9367444067  
Email : [bicbe@bigroup.in](mailto:bicbe@bigroup.in)



## HYDERABAD

Plot No:11, 1st Floor Door No: 5-8-002  
Ravi Colony, Thirumalagiri,  
Secunderabad, Hyderabad - 500015  
Phone: 040-40186640  
Coordinator (Sales & Service):  
+91-9346467077 / +91-6380977459  
Branch Manager: +91-9392928207  
Email : [bmhyd@bigroup.in](mailto:bmhyd@bigroup.in)



## MANGALURU

7/C-45, Baikampady Industrial Estate,  
Dakshina Kannada District,  
Mangaluru - 575011,  
Karnataka  
Email: [info@bigroup.in](mailto:info@bigroup.in)



## COCHIN

#270A, Malaimuppathil House,  
SMP Colony Road,  
Eroor South (P.O), Ernakulam -682306  
Phone: 0484-2781996 / 2779856  
Coordinator (Sales): +91- 9446093492  
Coordinator (Service): +91-9446093491  
Branch Manager: +91-9562401992  
Email : [bicochin@bigroup.in](mailto:bicochin@bigroup.in)